

Quality Early Care and Education...

INCREASES

School Success
High School Graduation Rate
Workforce Readiness
Job Productivity
Community Engagement
Commitment to Marriage and Family
Income Level

REDUCES

Rates of Crime
Teen Pregnancy
Need for Public Assistance
The Cost of Job Training
Costs Related to Special Education
School Grade Retention



Success By 6 Holistic Approach to Transforming Families:

- Test scores at Chisholm Elementary School reflect that graduates of the **Success By 6** Program have scored up to two full grades higher than children who did not attend the **Success By 6** Program. Additionally, standardized test scores of children who complete the **Success By 6** Program are 10 - 14 points higher than those of their classmates who did not attend the **Success By 6** Program.
- Since 1997, more than 125 parents have earned their GED, and many parents have gone on to higher education.
- 5,320 children, birth to age 3, were provided “medical homes” for regular checkups and immunizations through a public health collaborative project.



Our Mission: To ensure that all children living in Montgomery enter kindergarten healthy and ready to learn.



Helping all children succeed for life.

Success By 6 was developed in 1988 by the United Way in Minneapolis, MN as a way to ensure Minneapolis children entered school ready to learn. In 1993, **Success By 6** was implemented in Montgomery through a collaboration of the River Region United Way and the Montgomery YMCA. From 1993 to 1995, Family Guidance Center of Alabama provided teachers and classroom oversight for **Success By 6** Pre-K classrooms. In 2006, **Success By 6** became a program of Family Guidance Center of Alabama. Sources of **Success By 6** funding include the River Region United Way, The Children's Trust Fund, Working Woman's Home Association, and private donations.



Family Guidance Center of Alabama is a non-profit organization that has provided quality services designed to strengthen families since 1959. Our comprehensive services include counseling, parenting education, mentoring, child care support services, adult day care, career development, job training, and other therapeutic services for families. Family Guidance Center is committed to providing needed services throughout Alabama that are of the highest quality and that are consistent with the agency's standards of excellence.

Success By 6

A Program of

Family Guidance Center of Alabama
2358 Fairlane Drive . Montgomery, AL 36116
334.270.4100
www.familyguidancecenter.org



Helping all children succeed for life.

What is Success By 6?

Success By 6 is a community-based partnership consisting of parents, businesses, schools, and community leaders working together to deliver solutions and to ensure all children ages 0-6 develop the emotional, social, cognitive, and physical skills they need to be prepared for school -- and life. **Success By 6** initiatives are tailored to the specific needs of children and families in each community.



Success By 6 Goals:

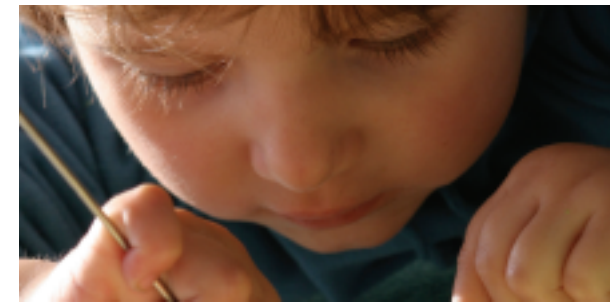
- Children throughout Montgomery County will be ready for school and prepared for successful futures
- The level of parental knowledge and parental involvement in children's lives will be increased
- Public awareness on the importance of early learning and development, literacy, health and safety, and other children's issues will be increased throughout Montgomery County
- Support for families and children will be provided through home visitation and case management services
- Collaboration with schools, local organizations, and businesses will bridge the gaps in children's services

The Importance of the Early Years

Success By 6 builds on long-term studies and extensive research in the areas of brain development, high quality child care, and early intervention. According to scientific and medical research, the experiences of children in the first 6 years of life have a tremendous impact on later school and life success. Consider the following research findings:

- 90% of the brain's growth occurs during the first three years of life.
- When children aren't exposed to regular play in a stimulating environment with a nurturing caregiver, their brain size is 20-30% smaller than children their age who have had these experiences.
- Rocking, talking, singing, smiling, and touching affect the way a child's brain develops, which shapes the way a child learns, communicates, and behaves.
- Children who attend high quality early childhood programs are 50% less likely to need special education services.
- Adults born in poverty who participated in quality learning programs at age 3 and 4 years had a 78% high school graduation rate, had 50% less criminal arrests, had higher earnings and property wealth, and had greater commitments to marriage and family.
- According to the High Scope/Perry Preschool Study, every \$1.00 invested in high quality early education produced up to a \$17.00 return.

For more information on how Success by 6 can make a difference in your community, please call 334.270.4100.



What Are We Doing to Address the Needs of Families with Young Children?

During the early childhood years, children develop important skills that lead to school readiness and future success. In addition to offering high quality early childhood services, **Success by 6** provides a wide array of services to meet the needs of families and their young children. These services include:

- Preschool/Pre-K classrooms for three and four year old children (Chisholm Baptist Church Community Center)
- Pre-K at Chisholm Elementary School
- Community Public Awareness
- Resource Materials
- Parenting / Family Education
- *Read to Me!* Children's Literacy Program
- Free Children's Books with participation in literacy activities
- *Motheread/Fatheread* Literacy Program
- *Born Learning* Home Visits / Case Management Services
- GED Program through First Baptist Church and Nehemiah Center
- Career Training and Resources through Family Guidance Center's Family Service and Resource Program